

Fall 2020  
Spring 2021

# BU Toy Library Newsletter

## RE-OPENING!

Thank you to everyone who took such good care of the borrowed resources during our temporary closure (March 2020 through July 2021) and to those who were able to safely return borrowed resources during these extraordinary times. Although our doors were closed, we have been working behind-the-scenes to prepare for our anticipated re-opening in the Fall 2021.

With combined support from the College of Liberal Arts, College of Education, and College of Science and Technology, the BU Toy Library will re-open with extended hours of operation. Please visit our website at [butoylibrary.bloomu.edu](http://butoylibrary.bloomu.edu) for more information.

Also, kindly note the following BU Masking Policy:

Following CDC (Centers for Disease Control) guidance, non-vaccinated individuals should continue to wear face coverings that completely cover the nose and mouth for their safety and the safety of others when within 6 (six) feet of other individuals.

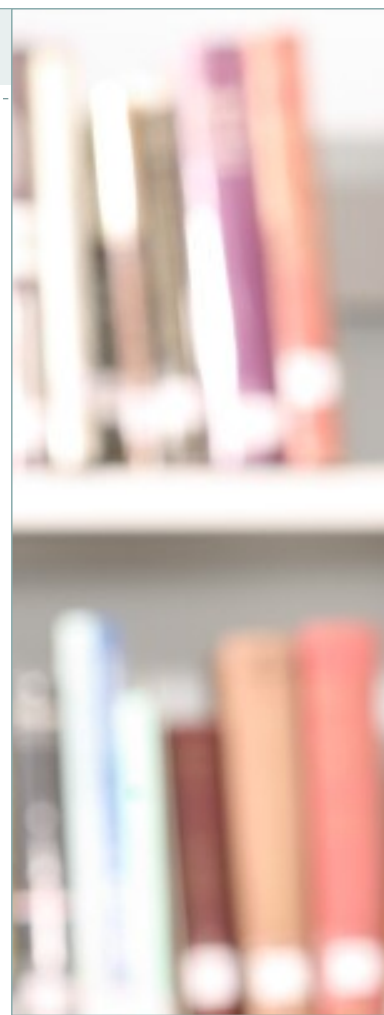
It is recommended that face coverings, which completely cover the nose and mouth, should be worn by everyone, including fully vaccinated individuals, when in common/shared indoor spaces, unless wearing a mask would create a risk to the individual's health and safety and/or make coursework, assessment, and/or and feedback impossible.

### INSIDE THIS ISSUE

Character Literacy Library .....	2
Program Fund.....	2
Exploring Good Work.....	2
Strengths-based Reading/Play .....	3
Digital Records .....	3
Request for Feedback .....	3

### ABOUT US

- Located at 1247 McCormick Human Services Center on the campus of Bloomsburg University of Pennsylvania (Bloomsburg, PA)
- Founded and directed by Dr. Mary Katherine Duncan, Professor of Psychology, Joan and Fred Miller Distinguished Professor of Good Work
- To learn more about the BU Toy Library, please visit our website at [butoylibrary.bloomu.edu](http://butoylibrary.bloomu.edu) or contact Dr. Duncan at [mduncan@bloomu.edu](mailto:mduncan@bloomu.edu).





## PROGRAM FUND

To all of the donors who generously gifted funds to the BU Toy Library through the BU Foundation's program fund, please extend our sincere gratitude. During the 2020-21 year, funds were used to

- purchase a collection of out-of-print Blues Clues interactive children's books,
- pay for our subscription to WordPress so that the resource center may continue to update and share information with our academic community, and
- acquire mesh totes to safely store, transport, check-in, check-out, and inventory our extensive collection of puppets, plush toys, and baby dolls.

## NEW! CHARACTER LITERACY LIBRARY

During the Spring 2020, PSYCH 327 Positive Psychology students participated in a high-impact service learning experience designed to teach them how to apply their psychological literacy in a socially responsible and personally meaningful way. After studying Peterson and Seligman's (2004) *Character Strengths and Virtues: A Handbook and Classification*, students began exploring children's picture books that showcased these positive traits. The goal was to create character literacy totes to donate to local non-profit programs that serve children. Unfortunately, the

semester was interrupted by the COVID-19 global pandemic. Inspired by the students' enthusiasm for the project, I created a special collections library of character literacy books for the BU Toy Library and published a manuscript on to share information about the process and product with other professionals.

Duncan, M. K. W. (2021). A picture book is worth a thousand words: Building a character literacy library. *Children and Libraries*. <https://doi.org/10.5860/cal.19.1.16>

## INTRODUCING SCHOOL-AGED CHILDREN TO THE CONCEPT OF GOOD WORK

As schools strive to educate young people for a life of purpose, research from the emerging field of positive psychology has found that purposeful people tend to be good workers. Through a two-semester Honors Independent Study project, Psychology major **Bryce Corrigan** helped to revise and update the elementary school toolkit aimed at introducing children in Grades K-4 to the concept of Good Work. Bryce performed a literature review on bibliotherapy, conducted a search of children's literature to identify books whose main characters embody the three Es of the Good Work model (excellence, ethics, and engagement), created a psychoeducational video, revised/assessed the elementary school instructional booklet and toolkit, and wrote a manuscript documenting her efforts. On Bryce's recommendation, dozens of books from the *Little People, Big Dreams* series were purchased for the BU Toy Library with funds from the Joan and Fred Miller Distinguished Professor award. These new resources will support school programming once COVID-19 restrictions have been lifted.



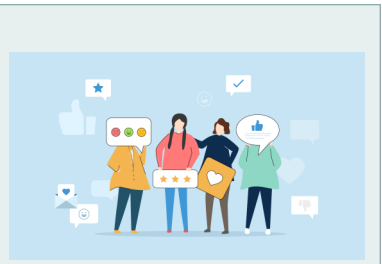
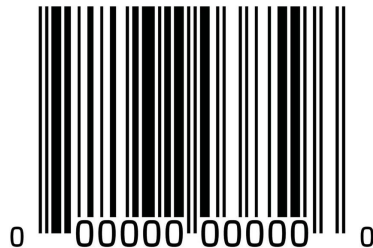


## STRENGTHS-BASED READING AND PLAY

With rising prevalence rates of Autism Spectrum Disorder (ASD), there has been increased attention to using strengths-based assessments and early intervention strategies to identify and address symptomatic behaviors as well as to build on children’s interests and abilities. During the Spring 2021, **Samantha Carney** began a two-semester Honors Independent Study project on this topic. After conducting a literature review, Samantha created psychoeducational materials and identified interactive books to expand the holdings of the BU Toy Library. Funds from the Joan and Fred Miller Distinguished Professor award were used to purchase these resources. During the Fall 2021, Samantha will track the use and usefulness of the newly developed psychoeducational materials and recently purchased books and toys. Stop by to check out our new resources!

## COMING SOON! DIGITAL RECORDS

BU Toy Library student worker, **Hilary Escobar**, has been working diligently to create digital records for ALL of the literacy and play resource center’s holdings. Soon, you will be able to search on ALMA (the Andrus Library’s searchable database) to see whether the BU Toy Library has a specific book or toy. In addition, we are moving toward more efficient check-in and check-out services through the use of an electronic barcode scanner.



## REQUEST FOR FEEDBACK

As the BU Toy Library prepares for another decade of service to our academic community, we strive to support students’ academic, professional, and civic development by providing access to literacy and play resources to support their interactions with individuals of all developmental ages and abilities.

So that we may continue learning how to support you best, a Contact Us tab has been added to our website ([butoylibrary.bloomu.edu](http://butoylibrary.bloomu.edu)). We look forward to receiving your questions, comments, suggestions, and newsletter submissions.

Sincerely,

*Mary Katherine Duncan*

